

ALL CHARACTERISTICS ARE BASED ON CONDITIONS AT 25°C, 50% RH AND 1013 hPa

REV	DCO'S AFFECTING THIS DRAWING	DATE	APPROVED
A	INITIAL REL. # 3346	4/7/10	<i>[Signature]</i>

1. Output:

200uA ± 60uA @ ambient air

2. Operation:

1. Temperature: -8 to 50° C
2. Ambient Pressure: 750 to 1250 hPa
3. Relative Humidity: Up to 100% Rh

3. Storage Temperature Range:

-0 to 45° C
5 to 25° Recommended

4. Range of Measurement (Full Scale):

100 to 210,000 ppm O₂

5. Response Times (in operation):

<180 s from 21 Vol. % down to 1000 ppm
<20 min from 21 Vol.% down to 250 ppm
<1 h from 250 ppm down to 100 ppm

6. Linearity Error:

± 3% of signal (above 1000 ppm)

7. Expected Operating Life:

2 years, depending on humidity and O₂ concentration.

8. Electrical Interface:

2x slip-rings on PCB

UNLESS OTHERWISE SPECIFIED
DIMENSIONS ARE IN INCHES
AND PER ANSI Y14.5-1982

.XX = ±.01
.XXX = ±.005
.XXXX = ±.002

ANGLES
±1'30"

maxtec®
SALT LAKE CITY, UTAH 84107

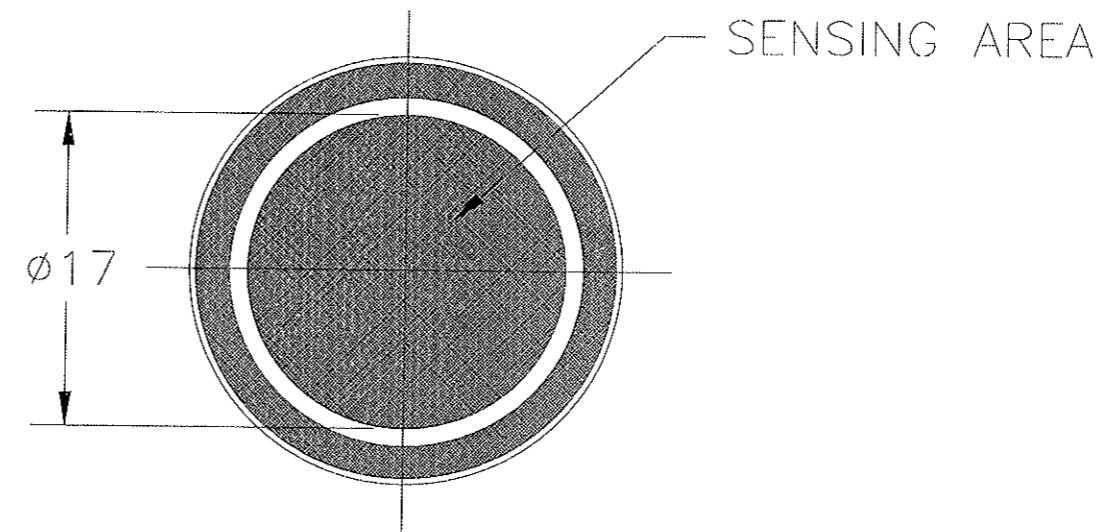
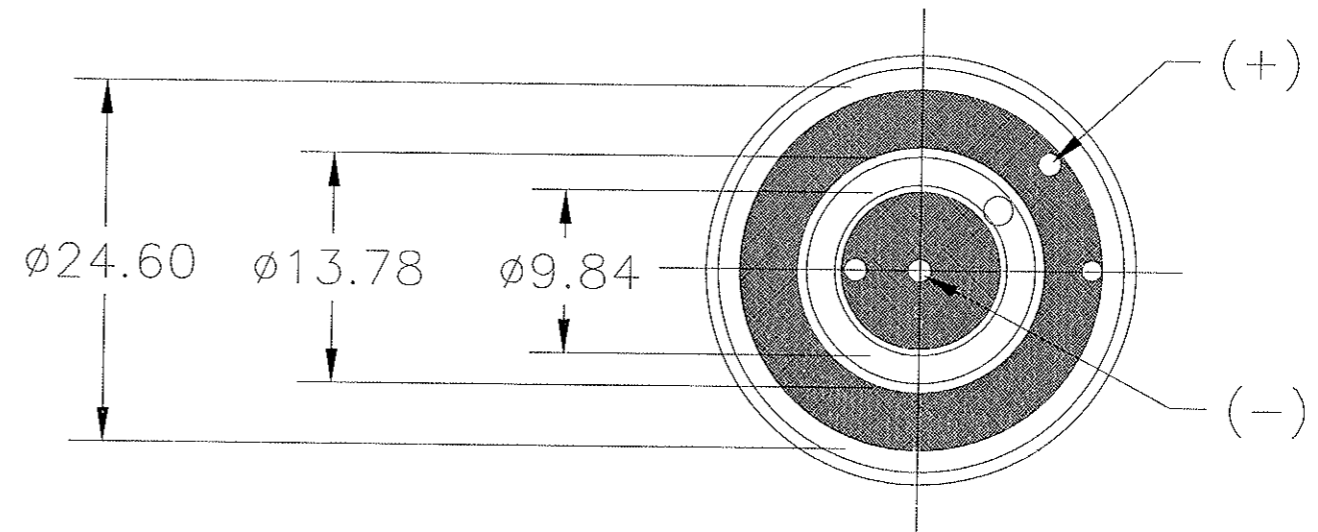
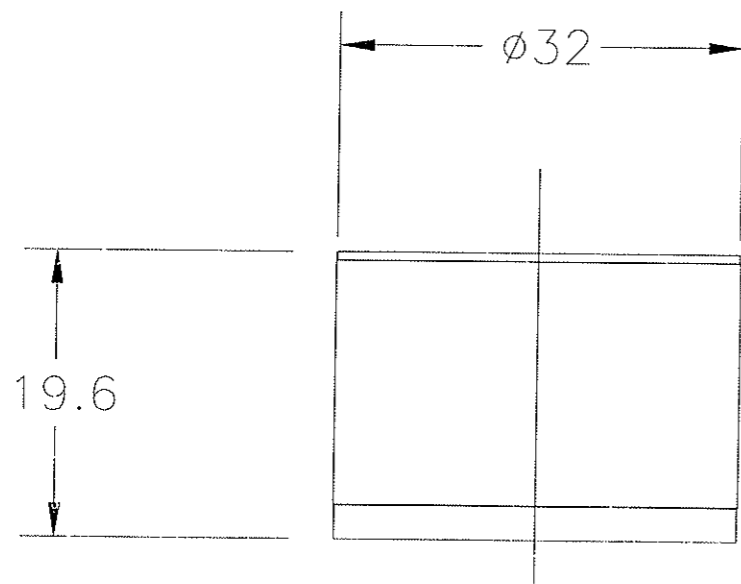
SPECIFICATION,
MAX-31 OXYGEN SENSOR



QA	<i>[Signature]</i>	04/08/10	PREP	D. LARSEN	4/5/10
MFG	<i>[Signature]</i>	4/8/10	CHKR	<i>[Signature]</i>	4/4/10
			ENG	<i>[Signature]</i>	4/8/10

SIZE	FSCM NO.	NUMBER	REV
B	1S815	R113P14	A
SCALE NONE		SHEET 1 OF 2	

PROPRIETARY INFORMATION
MAXTEC INC.



NOTES UNLESS OTHERWISE SPECIFIED

1. DIMENSIONS ARE FOR AN UNLABELED SENSOR.

SIZE B	FSCM NO. 1S815	NUMBER R113P14	REV A
SCALE NONE		SHEET 2 OF 2	

PROPRIETARY INFORMATION
MAXTEC INC.

R113P14 A