

# Blender Buddy For Bio-Med Devices Blender

## Instructions For Use

1. Attach the small adaptor block ② to the left side of the blender with the short bolt using the provided hex key. Be sure the small o-ring ④ is present around the threads of the short bolt ⑧ between the small block ② and the blender.

- Skip to Step 8 if flow meters are already attached.

2. Wrap both threaded ends of the pipe nipples ⑤ with teflon tape. (1-1/2 wraps)

3. Use a 7/16" wrench to tighten 1/8" NPT nipples ⑤ into the threaded holes of the flow meter ⑥ ⑦.

4. Tighten one assembled flow meter ⑥ into one of the threaded holes on the large block ①.

5. Remove the clear flow tube and shield from the other flow meter ⑦. Note how the flow meter components are arranged for reassembly in a subsequent step.

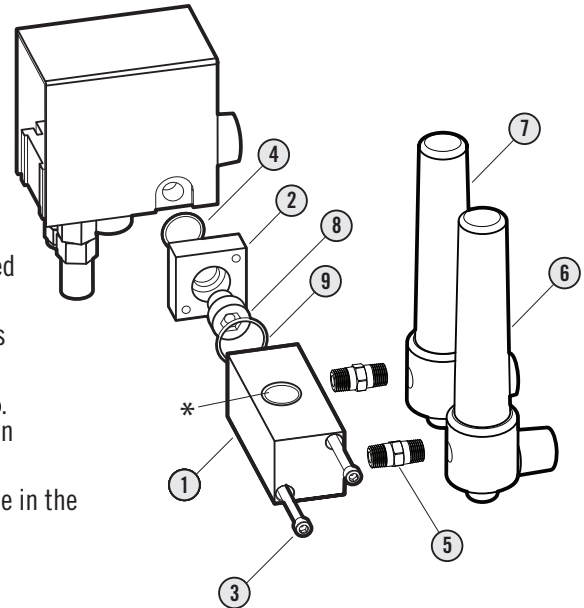
6. Tighten the disassembled flow meter ⑦ into the other threaded hole in the large block ①.

7. Reassemble the flow meter ⑦.

8. Insert large o-ring ⑨ into o-ring gland of the large block ①.

9. Attach large block ① to small block ② with the two long screws ③.

10. Supply gas to blender and check for leaks.



\*Accessory with sensor port is shown here. Image may vary from actual product.

Maxtec<sup>®</sup> Inc., 6526 South Cottonwood Street, Salt Lake City, UT 84107  
Tel 801.266.5300 • Fax 801.270.5590 • Toll Free 800.748.5355 • [www.maxtecinc.com](http://www.maxtecinc.com)



# WARNINGS



- : Carefully read instructions provided with flow meters, as well as this card, before use.
- : For use with air/oxygen blenders only.
- : Max pressure is 100 psi.
- : Check for leaks after assembly.
- : Do not use lubricants on o-rings.

