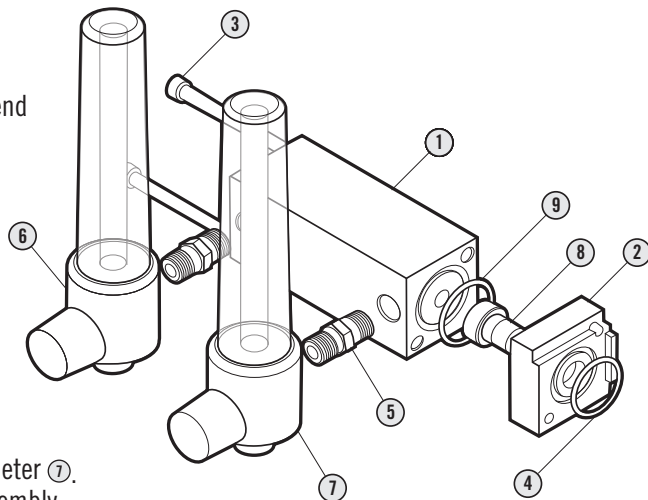


Blender Buddy Manifold For Maxblend Instructions For Use

1. Remove DISS fitting from left side of Maxblend.
2. Insert small o-ring ④ into the small adapter block ②.
3. Attach the small adapter block to the left side of the Maxblend using the short bolt ③ and provided hex key. (No teflon tape is necessary)

- Skip to Step 10 if flow meters are already attached.

4. Wrap both threaded ends of the pipe nipples ⑤ with teflon tape. (1-1/2 wraps)
5. Use a 7/16" wrench to tighten the pipe nipples ⑤ into the threaded holes of the flow meters ⑥ ⑦.
6. Tighten one assembled flow meter ⑥ into one of the threaded holes on the large block ①.
7. Remove the clear flow tube and shield from the other flow meter ⑦.
Note how the flow meter components are arranged for reassembly in a subsequent step.
8. Tighten the disassembled flow meter ⑦ into the other threaded hole in the large block ①.
9. Reassemble the flow meter ⑦.
10. Insert large o-ring ⑨ into o-ring gland of the large block ①.
11. Attach large block ① to small block ② with the two long screws ③.
12. Supply gas to the blender and check for leaks.





WARNINGS



- : Carefully read instructions provided with flow meters, as well as this card, before use.
- : For use with air/oxygen blenders only.
- : Max pressure is 100 psi.
- : Check for leaks after assembly.
- : Do not use lubricants on o-rings.