



4

3

2

1

ALL PRODUCT SPECIFICATIONS ARE APPLICABLE AT STANDARD CONDITIONS:  
1013 MILLIBAR, 25° C DRY AIR.

REV	DCO'S AFFECTING THIS DRAWING	DATE	APPROVED
A	INITIAL REL. # 1643	10/10/00	D. L.
B	DCO # 1839 ADD NOTE #15		

1. Output:  
8.5 to 15.0 mV
2. Operation:
  1. Temperature: 10 TO 51°C
  2. Ambient pressure: 600 – 1750 mBar
  3. Relative Humidity: Up to 100% Rh  
(Condensing atmosphere over several hours)
3. Storage Temperature Range:  
-20° to 60° C (-40 TO 70°C Intermittent)  
5° to 30° C Recommended
4. Range of Measurement (Full Scale):  
0 to 100% oxygen
5. Zero Offset:  
Less than 0.20 mV when exposed to  
to 100% nitrogen for 5 minutes
6. 90% Response Time:  
Less than or equal to 15 seconds
7. 96% Response Time:  
Less than or equal to 30 seconds
8. Linearity:  
± 1% Full Scale Error Maximum
9. Stability:  
Less than 0.5% of full scale over an 8 hour period  
between 20% and 100% Oxygen  
Less than 2.0% of full scale output per month  
when exposed to 21% Oxygen.
10. Repeatability:  
±1% Volume O<sub>2</sub> at 100% O<sub>2</sub>,  
applied for 5 minutes
11. Interference: Less than 0.3% O<sub>2</sub> response to:
  - 10.0 % CO<sub>2</sub> balance N<sub>2</sub>
  - 80.0 % N<sub>2</sub>O balance N<sub>2</sub>
  - 7.5% Halothane balance N<sub>2</sub>
  - 7.5% Isoflurane balance N<sub>2</sub>
  - 7.5% Enflurane balance N<sub>2</sub>
  - 9.0% Sevoflurane balance N<sub>2</sub>
  - 20.0% Desflurane balance N<sub>2</sub>
12. Warm-up Time:  
Less than 30 minutes after replacement of sensor
13. Nominal Sensor Life:  
>1,500,000% O<sub>2</sub> hours
14. Electrical Interface:  
3-pin male moxex connector (gold-plated pins)
15. Maximum Air leakage Through Sensor:  
.03 in<sup>3</sup> per minute @ 4 inch Hg  
(5.0 ml/per minute @ 100mm Hg)

UNLESS OTHERWISE SPECIFIED  
DIMENSIONS ARE IN INCHES  
AND PER ANSI Y14.5-1982

TOL = ±.01	ANGLES
TOL = ±.005	±1°30'
TOL = ±.002	

**mextec**  
SALT LAKE CITY, UTAH 84107

SPECIFICATION  
**MAX-16 OXYGEN SENSOR**

QA G. ROTH	8/1/02	PREP D. LARSEN	10/9/00
MFG E. MEADS	8/1/02	CHKR D. GOETZ	11/6/00
		ENG D. GOETZ	8/1/02

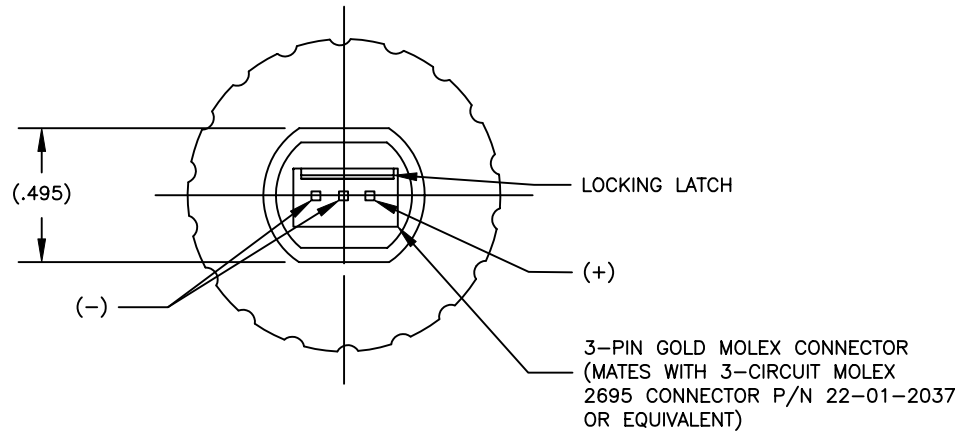
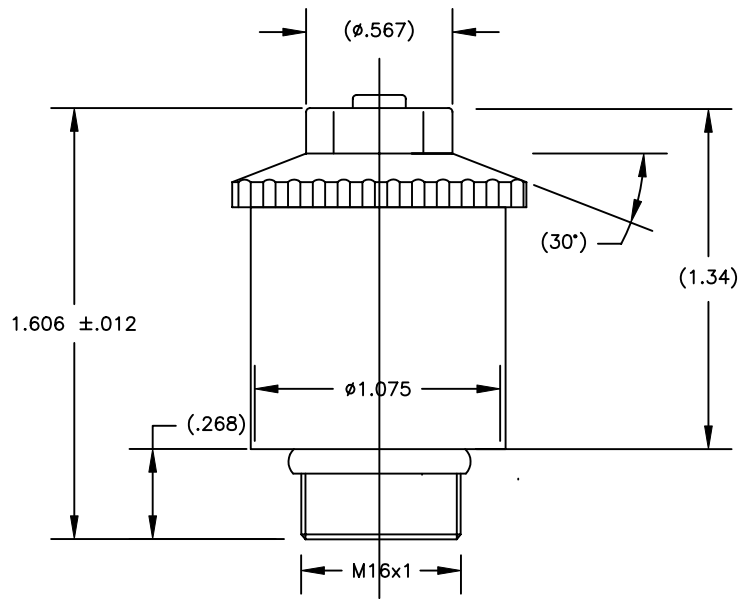
SIZE B	FSCM NO. 1S815	NUMBER R114P71	REV B
SCALE NONE			SHEET 1 OF 2

4

3

2

1



SIZE B	FSCM NO. 1S815	NUMBER R114P71	REV B
SCALE NONE		SHEET 2 OF 2	