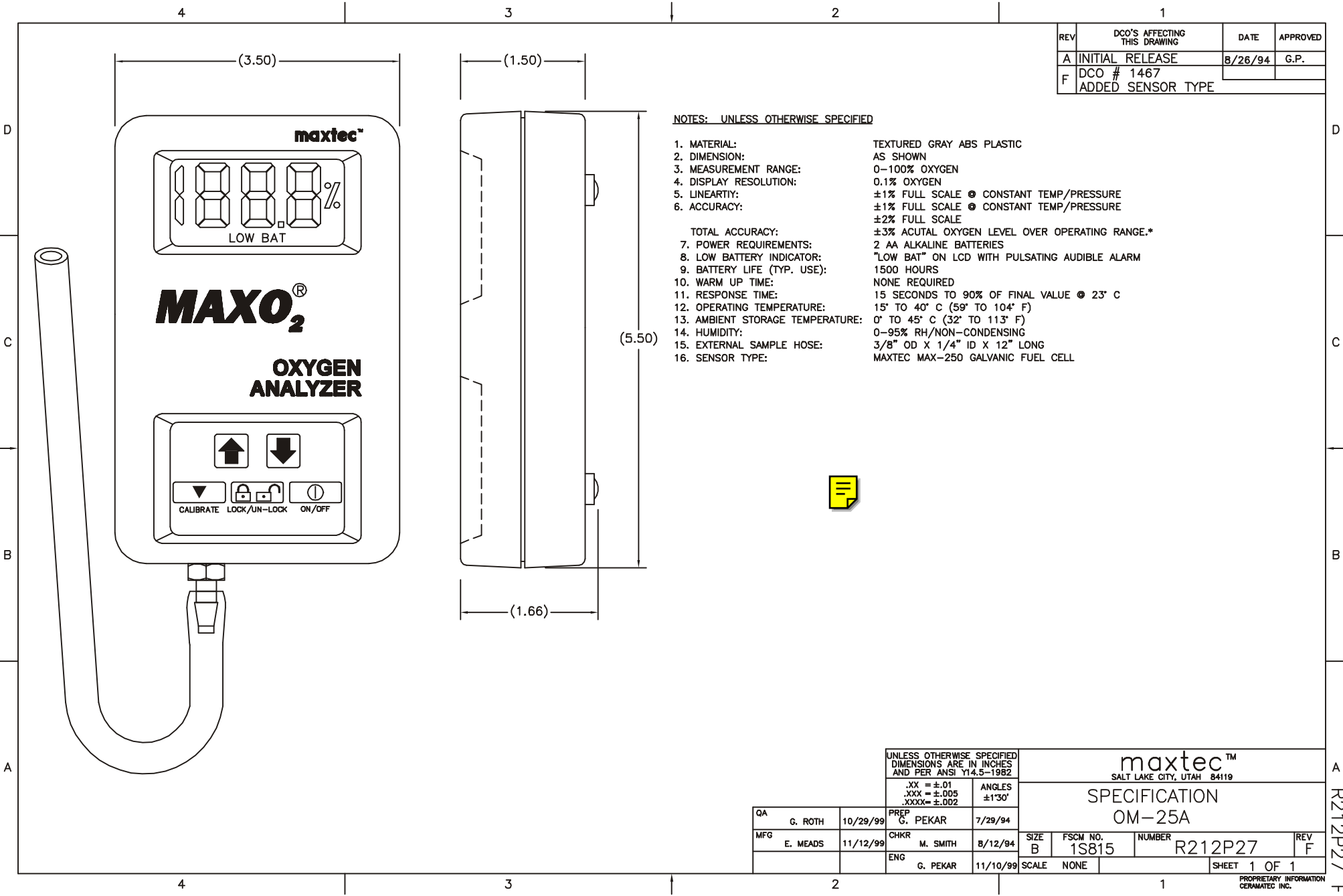


REV	DCO'S AFFECTING THIS DRAWING	DATE	APPROVED
A	INITIAL RELEASE	8/26/94	G.P.
F	DCO # 1467 ADDED SENSOR TYPE		

NOTES: UNLESS OTHERWISE SPECIFIED

- | | |
|----------------------------------|----------------------------------------------------------------|
| 1. MATERIAL: | TEXTURED GRAY ABS PLASTIC |
| 2. DIMENSION: | AS SHOWN |
| 3. MEASUREMENT RANGE: | 0-100% OXYGEN |
| 4. DISPLAY RESOLUTION: | 0.1% OXYGEN |
| 5. LINEARTY: | ±1% FULL SCALE ● CONSTANT TEMP/PRESSURE |
| 6. ACCURACY: | ±1% FULL SCALE ● CONSTANT TEMP/PRESSURE
±2% FULL SCALE |
| | TOTAL ACCURACY: ±3% ACUTAL OXYGEN LEVEL OVER OPERATING RANGE.* |
| 7. POWER REQUIREMENTS: | 2 AA ALKALINE BATTERIES |
| 8. LOW BATTERY INDICATOR: | "LOW BAT" ON LCD WITH PULSATING AUDIBLE ALARM |
| 9. BATTERY LIFE (TYP. USE): | 1500 HOURS |
| 10. WARM UP TIME: | NONE REQUIRED |
| 11. RESPONSE TIME: | 15 SECONDS TO 90% OF FINAL VALUE ● 23° C |
| 12. OPERATING TEMPERATURE: | 15° TO 40° C (59° TO 104° F) |
| 13. AMBIENT STORAGE TEMPERATURE: | 0° TO 45° C (32° TO 113° F) |
| 14. HUMIDITY: | 0-95% RH/NON-CONDENSING |
| 15. EXTERNAL SAMPLE HOSE: | 3/8" OD X 1/4" ID X 12" LONG |
| 16. SENSOR TYPE: | MAXTEC MAX-250 GALVANIC FUEL CELL |



UNLESS OTHERWISE SPECIFIED
DIMENSIONS ARE IN INCHES
AND PER ANSI Y14.5-1982

.XX = ±.01	ANGLES
.XXX = ±.005	±1'30'
.XXXX = ±.002	

QA	G. ROTH	10/29/99	PREP	G. PEKAR	7/29/94
MFG	E. MEADS	11/12/99	CHKR	M. SMITH	8/12/94
			ENG	G. PEKAR	11/10/99

maxtec™ SALT LAKE CITY, UTAH 84119			
SPECIFICATION OM-25A			
SIZE	FSCM NO.	NUMBER	REV
B	1S815	R212P27	F
SCALE	NONE	SHEET 1 OF 1	

PROPRIETARY INFORMATION
GERMATEC INC.

R212P27 F